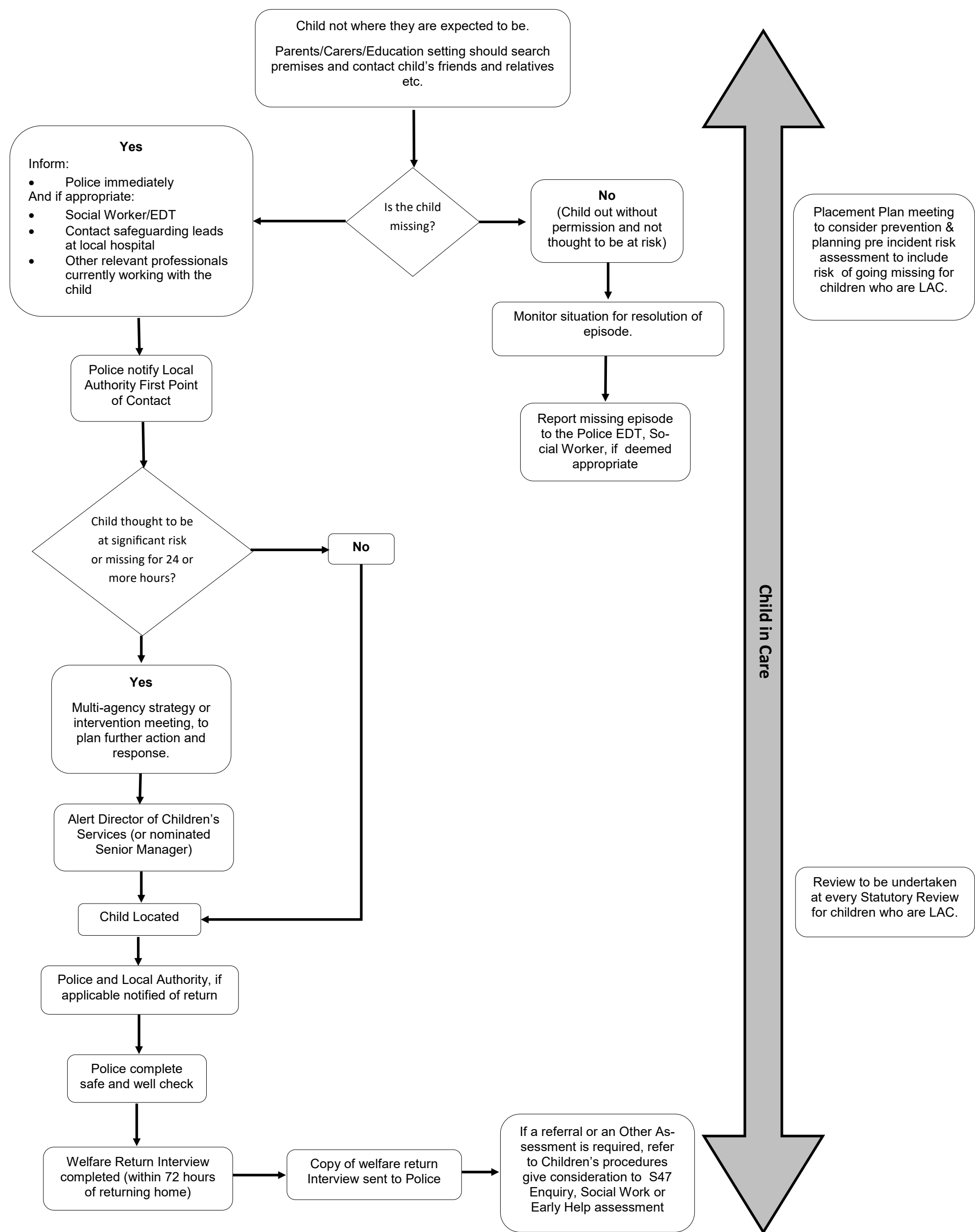


West Mercia Pathway for Children who go Missing from Home, Care or Education



If a child has had more than 3 missing episodes within a 90 day period, then a Missing intervention meeting should be convened.
Consideration should be given to the other criteria detailed with the [West Midlands Procedure 2.20 Children missing from care, home and education](#)

(ctrl and click on the procedure name)